



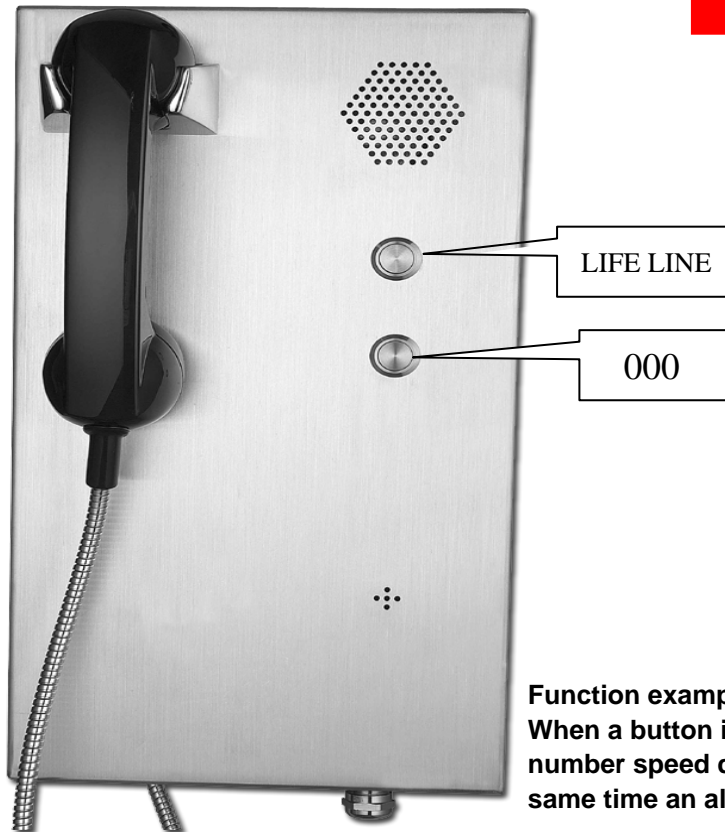
# Emergency Telephones

100% Australian Owned

[www.emergencytelephones.com.au](http://www.emergencytelephones.com.au)

## Lifeline & 000 - Hotline Telephone

MODEL: **ETZD-35**  
**HOTLINE**



### Function example:

When a button is pressed the pre-programmed number speed dials to a control room and at the same time an alert text message is sent to a phone.

### Main features:

1. Stainless steel, Rustproof, Weatherproof & Durable.
2. Supports GSM & Solar or 240 volts converted to 9 volts.
3. Automatically shuts down if the other side hangs up.
4. Handset - Noise Cancelling with Armoured Cord.
5. Hook Switch - Magnetic Reed Hook Switch.

### Applicable to:

- Highways & Bridges
- Factories
- Indoor or Outdoor
- Railway Stations
- Taxi or Bus Stands
- Ports or Docks

### Options:

1. Limited to 7 minute calls.
2. Colour.



### Sales and Service:



## Emergency Telephones

PO Box 606 Rockdale NSW 2216

Telephone: 02-9599-9555

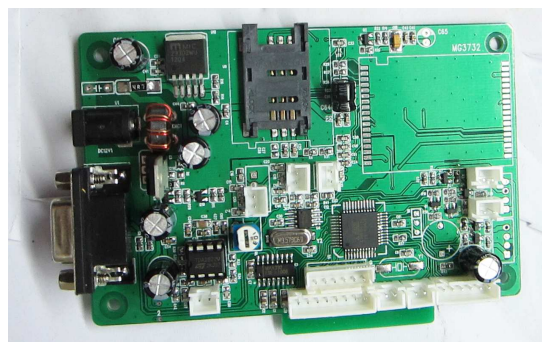
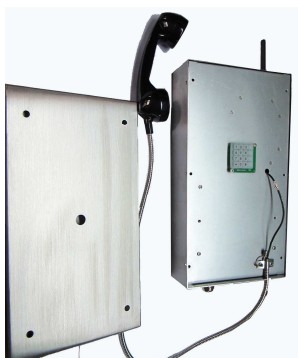
Fax: 02-9599-9225

Email: [sales@emergencytelephones.com.au](mailto:sales@emergencytelephones.com.au)

[service@emergencytelephones.com.au](mailto:service@emergencytelephones.com.au)

## Specifications:

Function module	Technical specifications
Formats	WCDMA850/1900/2100MHz GSM850/900/1800/1900MHz 3G GSM
Power-supply modes	Solar power supply or DC9V
Standby duration	42 DAYS
Call duration	More than 100 hours
Working voltage	9V
Working current	60mA-130mA
Environment temperature	-30℃~+75℃
Relative humidity	10%-95%
Dc resistance	< 500 Ω
Insulation resistance	> 50M Ω
Nonlinear distortion degree	< 5%
Prevent lightning voltage	>4000V
Buttons life	>50,000 Times
Averagetrouble-freetime (MTBF)	>10000 Hours



## Sales and Service:



## Emergency Telephones

PO Box 606 Rockdale NSW 2216

Telephone: 02-9599-9555

Fax: 02-9599-9225

Email: [sales@emergencytelephones.com.au](mailto:sales@emergencytelephones.com.au)

[service@emergencytelephones.com.au](mailto:service@emergencytelephones.com.au)

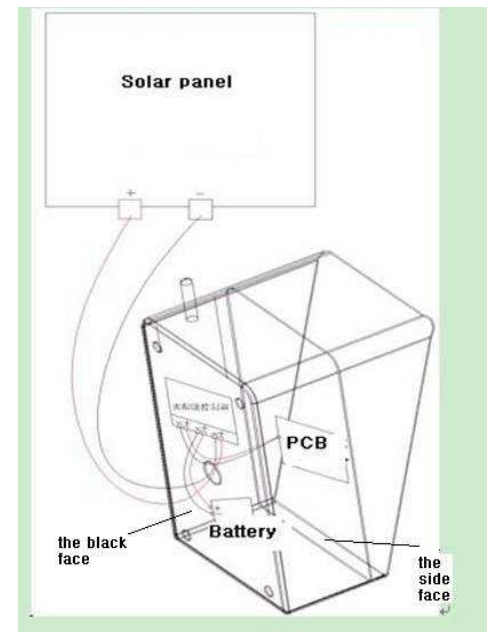
## Usage:

Method A: Press one of the emergency buttons and you will be automatically connected to a preset number.

Method B: Pick up the handset, press one of the emergency buttons and you will be automatically connected to a preset number.

This unit can also send a text message.

## Connection:



## Size & Weight:

Size of the phone	299*179*97/128mm
Size of the solar panel	510*460*250mm
Weight of the solar panel	2.9Kg
Size of the box for the solar panel	550*470*520mm
Size of box for phone	433*276*191mm
Weight of phone	6.5Kg

## Sales and Service:



## Emergency Telephones

PO Box 606 Rockdale NSW 2216

Telephone: 02-9599-9555

Fax: 02-9599-9225

Email: [sales@emergencytelephones.com.au](mailto:sales@emergencytelephones.com.au)

[service@emergencytelephones.com.au](mailto:service@emergencytelephones.com.au)